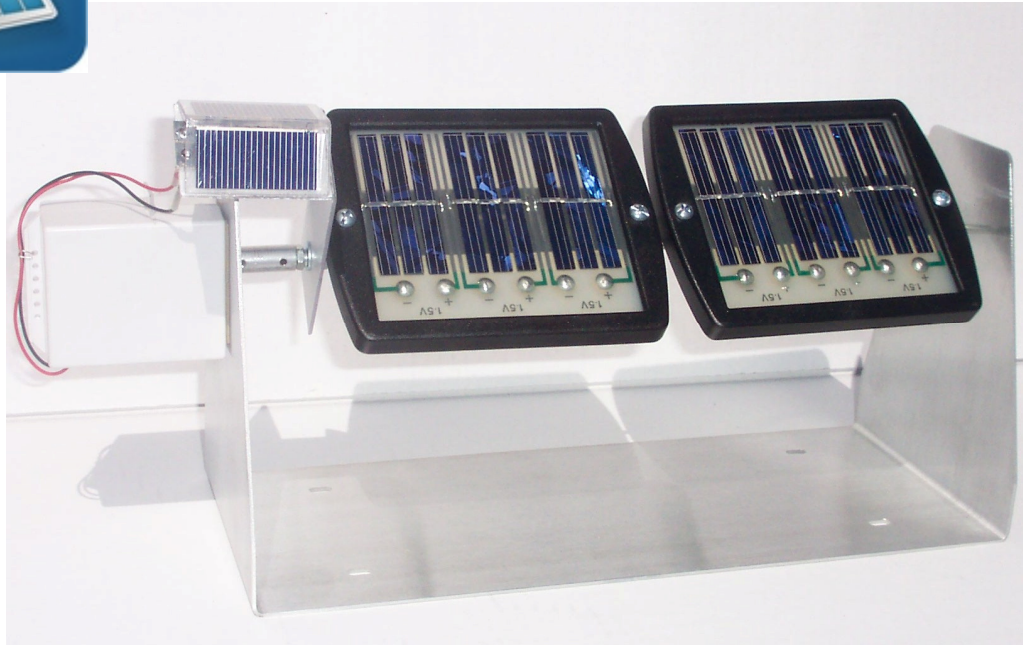


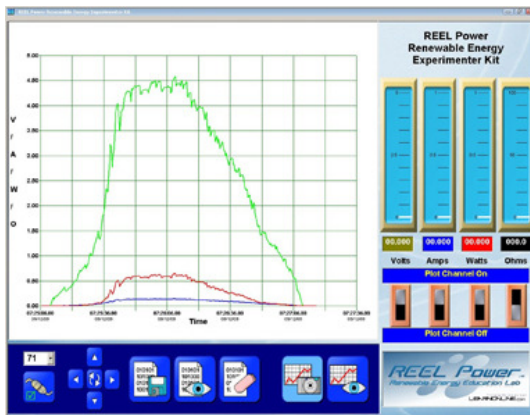


Double Wide Sun Tracker Kit Quick Look

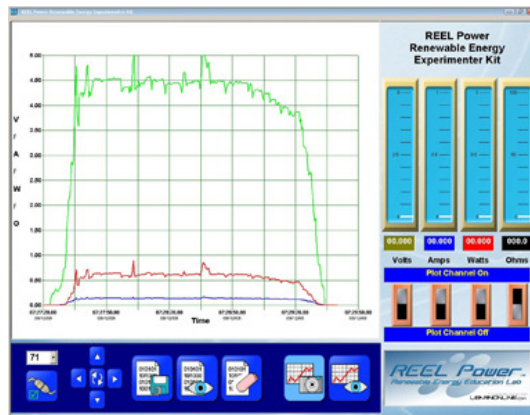


The **Double Wide Sun Tracker** is for experimenting with two solar panels while keeping them always pointed at the sun. This allows experiments to take full advantage of the sun's constant energy. Below are two computer plots showing these solar panels with and without the sun tracker. As you can see there is about a 33% to 40% increase in voltage (green line), current (blue line) and power (red line).

The **Double Wide Sun Tracker** can be interfaced with computer-based measuring equipment and software from LearnOnLine, Inc. Contact your local dealer or visit www.learnonline.com for more information.



Plot of Eight Hours of Solar Data without the Double-Wide Sun Tracker



Plot of Eight Hours of Solar Data with the Double Wide Sun Tracker